



The NHS Long Term Plan in East Berkshire

Dr Andy Brooks

Clinical Chief Officer, East Berkshire CCG



NHS Long Term Plan (LTP)

- Released in January 2019
- Linked to a long term funding agreement for the NHS
- LTP has been informed by frontline health and care staff, patient groups and other experts.
- Covers the next ten years and beyond
- Need to take into account staff shortages and growing demand for services





What the LTP will focus on for patients

- Making sure everyone gets the best start in life
- Delivering world-class care for major health problems
- Supporting people to age well

Priorities

①

②

③





Making sure everyone gets the best start in life

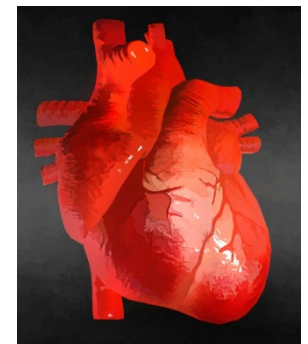
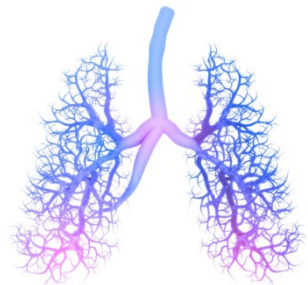
- Reduce still-births and mother and child deaths by 50% by:
 - Ensuring those who will benefit most have continuity of care through and beyond their pregnancy
 - Providing extra support for expectant mothers at risk of premature death
- Expand support for perinatal mental health
- Take further action on childhood obesity
- Increase funding for children and young people's mental health
- Reduce waiting times for autism assessments
- Provide the right care for children with a learning disability
- Deliver the best treatment available for children with cancer





Delivering world-class care for major health problems

- Provide education and exercise programmes to patients with heart problems
- Diagnosing cancers earlier
- Invest in spotting and treating lung conditions early
- Increase spending on mental health care
- Increase the number of people getting therapy for depression and anxiety
- Deliver community based physical and mental care for people with a severe mental illness





Supporting people to age well

- Increase funding for primary and community care
- Bring different professionals together to co-ordinate care better
- Help people to live independently at home for longer
- More rapid community response teams
- NHS staff support to people living in care homes
- Improve the recognition of carers and the support they receive
- Make progress on care for people with dementia
- Giving people more say in the care they receive, particularly towards the end of their lives



Working together to deliver excellent and sustainable healthcare



Delivering the ambitions

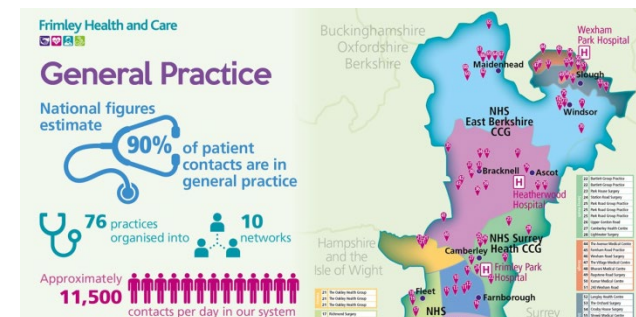


- Do things differently
- Prevent illness and tackle health inequalities
- Support our workforce
- Make better use of data and digital technology
- Get the most out of the taxpayers investment in the NHS



What the LTP means for Primary Care

- Additional roles in primary care
- Permanent solution to indemnity
- Quality payments refresh and a new Quality Improvement approach
- Joining up of Urgent care
- Digital technology
- 5 year funding clarity and certainty
- A new contract framework
- Primary Care Networks





Primary Care Networks (PCNs)

- PCNs become the footprint on which other NHS community-based services can fit
- Strength of PCNs will depend on strength of relationships between members & wider health and social care community
- Clear geographical focus for improving health and wellbeing
- General practice to take a leading role
- Networks registration requirements must be confirmed by CCGs and supported by ICS
- Investment aligned to networks



What happens next?

- The Integrated Care System needs to develop and implement its own strategy for the next five years
- This will need to set out how local action will deliver the ambitions in the LTP to improve the health and wellbeing of our communities
- Healthwatch will support the NHS to ensure that the views of patients and the public are heard
- Age UK will be working with other charities to provide opportunities to hear from people with specific needs or concerns





<https://www.england.nhs.uk/long-term-plan/>



East Berkshire CCG Strategic Priorities

- **Person:** working alongside individuals to empower them to take control of their own health and wellbeing
- **Place:** working in local communities, local authority areas or across a bigger geography to respond to the needs of our population
- **Engage:** engaging with staff, member practices, local people and other stakeholders so that services are informed by their needs, views and behaviours
- **Integrate:** breaking down the barriers of traditional organisational boundaries to deliver effective and responsive services



Questions?